

Board of Visitors
 13 members appointed by Governor
 The President of the Board of Agriculture & Consumer Services
 Presidents of Faculty and Staff Senates, undergrad and grad reps.
 (non-voting representatives)
 (Kim O'Rourke, VP for Policy and Governance,
 Secretary to the Board)

Executive
 (President)

Academic, Research & Student Affairs
 (EVP & Provost)

Buildings & Grounds
 (VP for Administration)

Finance & Resource Management
 (VP for Finance & CFO)

Compliance, Audit & Risk Management
 (Director of Univ. Internal Audit)

Governance & Administration
 (VP for Policy and Governance)

President

University Advisory Council on Strategic Budgeting and Planning

University Council
 (Kim O'Rourke, VP for Policy and Governance)
 Approximately 75 members, 6 non-voting

9 staff Elects - Spring

Commission on Faculty Affairs
 (Jack Finney, Faculty Affairs)

Commencement
 Benefits
 Honorifics

Commission on Administrative and Professional Faculty Affairs
 (Kirk Wehner, Human Resources)

Commission on Student Affairs
 (Patty Perillo, Student Affairs)

Commission on Staff Policies and Affairs
 (Kirk Wehner, Human Resources)

staff Benefits *Faculty - 1*
AP Faculty - 1

Commission on Outreach and International Affairs
 (Guru Ghosh, International Affairs)

Commission on Equal Opportunity and Diversity
 (Menah Pratt-Clarke, Inclusion and Diversity)

Commission on Undergraduate Studies and Policies
 (Rachel Holloway, Undergraduate Education)

Undergrad Curriculum
 UCC General Education
 Academic Support
 Athletics
 Honor Council
 Library

Commission on Research
 (Theresa Mayer, Research and Innovation)

Intellectual Property
 Library

Commission on University Support
 (Sherwood Wilson, Administration)

Campus Development
 Computing/Communications
 Sustainability
 Transportation/Parking

Commission on Graduate Studies and Policies
 (Karen DePauw, Graduate Education)

Grad Curriculum
 Library

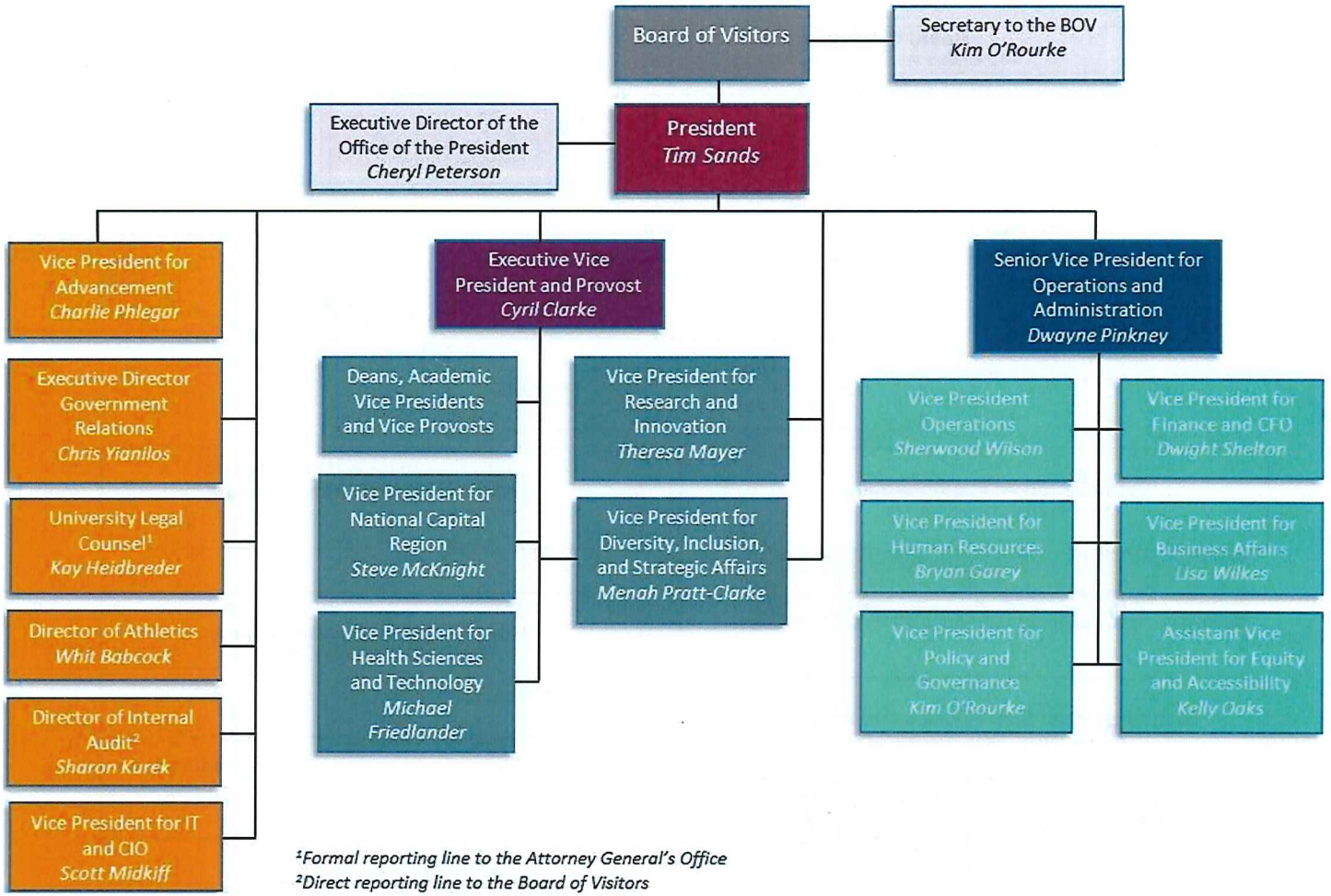
Staff Senate

Faculty Senate

SGA

GSA

Staff Associations



EVP & Provost Academic Administration Organizational Chart
 As of January 14, 2019

